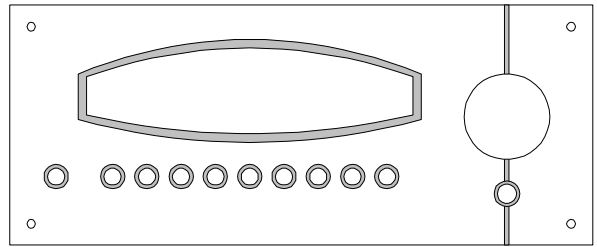




B & K Components, Ltd.

To: B & K Authorized Service Centers
From: B & K Components, Ltd.
Subject: Converting Front Left and Front Right channels
of the AVR 307 to be used as zone two amplified
channels

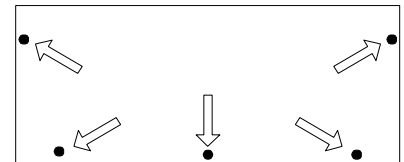
Document: 307_Front Channel_Z2_Conversion



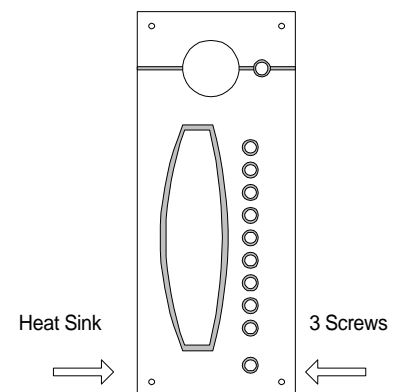
***These procedures are to be performed by an authorized service technician.**

1. Turn unit off, **Unplug the AC Power cord**, allow 5-10 minutes for the power supply capacitors to discharge. Power off all source players connected to the AVR 307.
2. Disconnect all input and output, video and digital cables from the AVR 307. At this point, no cables should be plugged into the AVR 307.
3. Place a soft protective mat or cloth towel on working surface to prevent any damage to the face plate, top cover or chassis. Place unit on mat or towel.

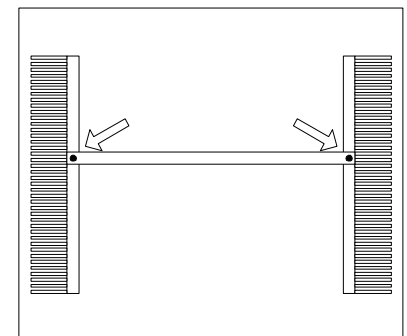
4. Remove the 10 Phillips head screws from the top cover (5 per side) and set top cover and screws aside.



5. While facing the front of the unit, tip the unit on it's left side and remove the 3 - # 2 Phillips head screws and lock washers that fasten the left heat sink assembly to the bottom of the chassis. With the unit on it's side, the left heat sink is the one on the bottom, closest to your working surface. Once the 3 screws and lock washers are removed lay unit back down on it's feet. Take care not to lose the lock washers or screws.



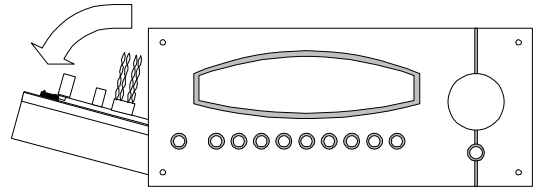
6. Remove the 2 - # 2 Phillips head screws and lock washers from the center heat sink bracket that connects the two heat sink assemblies. Set bracket, screws and lock washers aside. Take care not to lose the lock washers or screws.



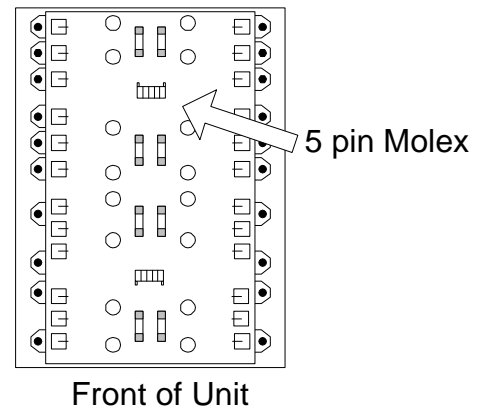


B & K Components, Ltd.

7. Carefully lean the top of the heat sink assembly towards the outside edge of the unit. You will have to move some of the wire harnesses to provide enough wire slack for proper working space. You now have access to the Molex connectors on the amp channels (printed circuit board's).

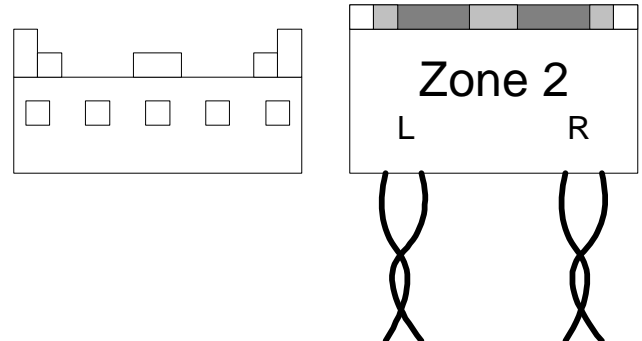


8. Remove the 5 pin female Molex plug, with two sets of green and blue twisted wires, from the male Molex receptacle for the amp channels closest to the back of the unit. These are the "front left & front right" channels.



9. Carefully tie the wires removed in step 8 and place the female Molex away from the amp channels and the area where the heat sink assembly will be placed.

10. Locate the female Molex plug that is marked **ZONE 2**. You will need to untie the wires to allow for enough wire slack to insert the **ZONE 2** - 5 pin female Molex onto the now empty male Molex receptacle from step 8. These Molex connectors are keyed so they only fit on the Molex receptacle one way. Plug the **Zone 2** - 5 pin female Molex onto the empty male Molex receptacle.



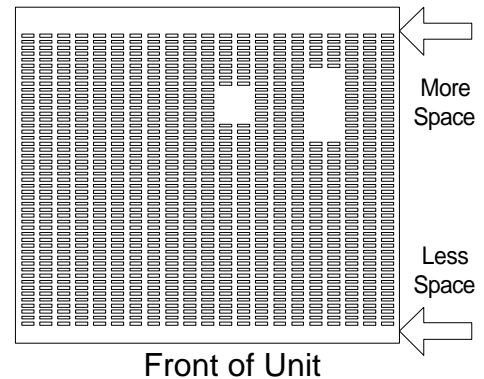


B & K Components, Ltd.

***CAUTION: Don't pinch any wires under the heat-sink assembly when tightening the screws through the bottom of the unit. Hand thread each screw when replacing to insure against cross threading.**

11. Carefully lean the heat sink assembly back into the AVR 307. Take care not to pinch any wires between the heat sink and chassis. Replace the center heat sink bracket using the 2 - # 2 Phillips head screws and lock washers removed in step 6. Hand thread each screw to insure against cross threading.
12. Flip the unit back on it's left side and replace the 3 - # 2 Phillips head screws and lock washers, removed in step 5, through the bottom of the unit into the heat sink assembly. Hand thread each screw to insure against cross threading.
13. Visually inspect your work. Be sure that no wires are pinched or damaged.

14. The top cover can now be replaced with the 10 - # 2 Phillips head screws removed in step 4. Be sure to put the top cover on the way it is shown in the diagram to the right.



15. Reconnect the signal, source and *speaker wires.

*The Front Left and Front Right speaker terminals are now configured for Zone 2 operation. Whatever source is selected in Zone 2 will now be directed to these outputs.

*The Front Left is now Zone 2 Left and the Front Right is now Zone 2 Right.

16. Reconnect the main AC power cord. Turn the unit on. Reset the unit by simultaneously pressing the *sleep*, *down* and *menu* buttons.

The unit can now be used for 7.1 Surround in **ZONE 1** using the five amplified channels and an additional 2 channel amplifier connected to the Front Surround Outputs. It is also configured for **2** amplified channels in **ZONE 2**. The Front Left and Front Right speaker terminals are now configured for zone 2.

When power to Zone 1 is turned off all amp channels are muted. Therefore, power for Zone 1 must be on in order for the now configured Zone 2 channels to be on. While using Zone 2, if audio in Zone 1 is not desired an empty source may be selected, the volume in Zone 1 may be lowered or Zone 1 may be muted by using the mute button on the remote.

Please refer any questions to B&K's Customer Service Department at 800-543-5252.